

**EASTCOTE RESIDENTS' ASSOCIATION**

**79th ANNUAL GENERAL MEETING**

WILL BE HELD ON

**WEDNESDAY, 26 MAY 2010**

OAK HALL  
EASTCOTE COMMUNITY CENTRE  
SOUTHBOURNE GARDENS

**at 7.30pm**

**Guest Speaker – Mike Price**  
**Civil Protection Manager of Hillingdon Council**

telling us about Hillingdon's plans for a major emergency  
e.g., air crash, rail disaster, pandemics, floods.

What support can we expect?

**ALL RESIDENTS WELCOME – WHETHER ERA MEMBERS OR NOT**

Please come along to discover what the Association does on your behalf  
and let us know your concerns and expectations for Eastcote

Light refreshments will be served during the meeting

**PEMBROKE PARK – RAF EASTCOTE (Sandringham)**

A big welcome to the newcomers to Eastcote who have recently moved into the new development on the site of RAF Eastcote. If you wish to join the Eastcote Residents' Association, your road steward contact is Gawain Cox, 1 Dollis Hill House, 12 Coleridge Drive, HA4 8GX.  
Mobile: 07545 009087.

## CHAIRMAN'S REPORT

Well, life seems to get busier. While the number of Full planning applications is less than previously – see the report later in this edition – the number of other subjects requiring attention seems to increase. You can tell by the diversity of reports in this newsletter that your ERA has been very busy.

Now that spring is here, it is great to see the many new bulbs around Eastcote, providing us with a great show, and our thanks go to all the volunteers who planted them. The results of our successes in obtaining Hillingdon Council Ward Funds are starting to appear, and the various “Friends” groups who look after our local parks and green spaces grow from strength to strength.

At the time of going to press, the latest application to redevelop Initial House in Field End Road had been withdrawn. Although we welcome redevelopment of this site, and the proposed plans were a significant improvement on previous ones, we felt that there was still room for further improvement.

We are pleased to announce that, after a long incubation period, we now have a website for the Eastcote Residents' Association at [www.eastcoteria.co.uk](http://www.eastcoteria.co.uk). Over the coming months we hope to develop it further to include much more information. If you have any comments or suggestions for items to be included, please contact us through the link on the website.

With a final number of at least 385 dwellings, RAF Eastcote or Pembroke Park (currently named Sandringham by the developers) will have a significant effect on Eastcote. And now that occupation of some properties has started, we welcome these new residents to Eastcote. We hope that some of them will come along to ERA meetings and become involved. It is good to see that the proposed naming of streets and buildings, commemorating the site's past, has been adopted.

Peter Collins, a stalwart of ERA, will be standing down from the committee at our AGM. Peter, a former chairman, has recently looked after, among other things,

2

health matters, Community Voice and liaison with Ruislip Lido, and we thank him for all his efforts on our behalf. If there is anyone who can help us in these areas, we would be very pleased to hear from them.

At Ruislip Lido, as many of you will be aware, Hillingdon Council are proposing improvements or changes – it depends on your viewpoint. We await developments and hope that the Council fully consult with all residents who will be affected by their plans.

Following our successful forum in November, just a final reminder that all members are welcome at our AGM on Wednesday, 26 May at the Eastcote Community Centre, Southbourne Gardens, where our speaker, Mike Price, will enlighten us on what to do in the event of a major local emergency. Let's hope we never need to put his advice into practice.

*Chris Groom, Chairman*

## **ERA WEBSITE**

We have, some people will say at last, set up an ERA website. Our address is [www.eastcotera.co.uk](http://www.eastcotera.co.uk)

If you have any comments/additions etc., please send them to [era@eastcotera.co.uk](mailto:era@eastcotera.co.uk)

Our sincere thanks to our new member, Gawain Cox, for preparing this website for the Association.

## **WARD FUNDS**

By the time you read this we hope you will be able to see where some of the Council-allocated Ward Funds for Eastcote & East Ruislip ward have been spent. Items suggested by ERA include three bench seats in Field End Road and Eastcote High Road, three new notice boards for Eastcote Residents' Association and a community notice board, rubbish bins, a new planter and many areas of new plantings with shrubs and bulbs.

## **YOU CAN UNCROSS YOUR LEGS**

At last the promised public toilets are open. The new building in the Devonshire Car Park provides male/female and disabled toilet facilities.

3

## **LIDO MANAGEMENT ADVISORY GROUP**

Hillingdon Council have announced new plans for Ruislip Lido as part of their Civic Pride programme. Over the next two years the Council are proposing to invest resources to improve and develop facilities at the Lido, including

- Improved access to the site.
- Increased car parking with around 200 additional spaces.
- Raised water levels.

- Better fishing facilities.
- Improved toilets and changing facilities in the beach area.
- Improved water quality to allow swimming.
- Provision of adult boating and children's paddle boating.
- Further improvement and investment in the miniature railway.
- Improvements to the current refreshment facilities.

While many people welcome the proposals, concerns have been expressed about problems with existing parking and anti-social behaviour, as well as future consideration for the wild life.

Ruislip Residents' Association would welcome your views. Please email them to [feedback@ruislipresidents.org.uk](mailto:feedback@ruislipresidents.org.uk).



## **BROWN BADGE or BLUE? DON'T GET CONFUSED or BOOKED IN OUR CAR PARKS**

If you are visually impaired, or a driver or passenger with any disability, you may be entitled to use the Blue Badge scheme in Hillingdon Borough car parks. We believe this scheme is generally well understood as Disabled Parking.

In Hillingdon, however, there is also the Brown Badge scheme, eligible to anyone aged 65 or over who lives in the borough. Motorists with a brown badge are entitled to use dedicated parking spaces in council-owned car parks in Hillingdon. These spaces will be as close as possible to pay and display machines and local facilities. Please note that Brown Badge holders are required to pay the appropriate fee at the ticket machine – it's not free parking.

4

Please also note that anyone parking in bays designated blue or brown without displaying the relevant badge will be issued with a **penalty charge notice**.

To apply for a brown badge by post, send your name, address and phone number (optional) to: Brown Badge, London Borough of Hillingdon, Parking Services, Harlington Road Depot, Hillingdon, Middlesex UB8 3EY. To apply by email, send the same details to [parkingenforcement@hillingdon.gov.uk](mailto:parkingenforcement@hillingdon.gov.uk). For general information about the scheme, please phone 01895 250926.

## **“LADIES IN THE NIGHT WALK” IN AID OF MICHAEL SOBELL HOUSE HOSPICE**

Ladies, join us on a Summer’s Night Walk on Friday, 4 June to raise much needed funds for Michael Sobell House. Ladies of all ages and fitness are welcome; perhaps you can get together a group of friends, or if you are alone we will join you up with a walking partner. You can choose between a five- and nine-mile walk around Northwood and Moor Park beginning at 10pm, whether walking in memory of a loved one or just for fun. There will be refreshments and comfort stops en route. SMC are providing four support cars and the route will be marshalled throughout. Registration is £20, which includes a T-shirt and fundraising pack. Full details appear on our website. You can download an entry form from [www.michaelsobellhouse.co.uk](http://www.michaelsobellhouse.co.uk) via Events, or we can send one in the post. Just contact us in fundraising. For more information, call 01923 844829 or email [ochambers@michaelsobellhouse.co.uk](mailto:ochambers@michaelsobellhouse.co.uk). Can you help us marshal; help us to keep the Ladies In The Night walking safe? Please contact Ophelia on 01923 844829 if you can help Michael Sobell House.

### **WE NEED YOUR UNWANTED GIFTS**

If you have any unwanted gift items we are looking for cosmetics, gifts, spirits and wines, chocolates, jewellery, pottery, glassware, scarves, ceramics and more. Please drop off any goodies at the Fundraising Office, next to the hospice in Mount Vernon Hospital. Entrance at gate 3, White Hill Road, Northwood.



## **EASTCOTE CONSERVATION**

On 31 October last year, 60 volunteers of all ages could be seen working alongside the bank of the River Pinn between the main drive into Eastcote House Gardens and the junction with Field End Road. They were planting a great number of wild-flower

bulbs and wild-flower seeds, donated by Barclays Bank, and after the most severe of winters, not to mention vehicles driving over and parking on the verge, some of these brave little flowers have survived. They will now spread naturally, and in a year or two be glorious. We hope to have another Eastcote Volunteer Day this autumn, working at Forge Green. Eastcote Residents' Association have already pledged to supply crocus bulbs for planting at the roadside verge.

This work will complement the new sign at Forge Green, painted by Graham Pellow, chairman of the Eastcote Arts Society. By the 1500s this area was part of a section of land alongside the Pinn called Well Green, also known sometimes as Long Marsh. It was named Forge Green in the 1970s by the newly formed Eastcote Conservation Panel.

Pretty Corner (the small park at the corner of Fore Street and Eastcote High Road) has been renovated. The yew hedges were reshaped, "weed" infestation such as ivy and ash has been removed, and new yews were planted in the gaps caused by vehicle crashes. The overhanging trees at the rear were cut back, and roses that were due for renewal have been replaced with low-growing heathers, Berberis, and Cotoneaster. The broken-down planter was replaced with a seat made from cut and polished stones, designed by Harrow & Hillingdon Geological Society.

The new information board gives information about the stones and the history of Pretty Corner. It was once a pond, called Guts Pond, while Fore Street was once Frog Lane. How names change! This project was made possible thanks to a grant to the Conservation Panel from the Ward Funds.

A freezing, wet December day saw the Eastcote House Gardens (EHG) volunteer gardeners and nearby residents transforming the derelict paddling pool at Warrender Park into a flower bed. The plants were those recycled from Eastcote House Gardens. Daffodils and tulips were planted in the shrub borders, and a new pyracantha hedge planted at the boundary with Myrtle Avenue gardens. This project also received a Ward Funds grant. Warrender Park and Highgrove Woods both have newly formed Friends Groups, whom we wish well and look forward to working with.

As mentioned elsewhere, the Friends of Bessingby & Cavendish Parks held an Easter Egg Hunt on Easter Monday. These parks will soon have a "Play Builder" area to encourage imaginative play for older children.

Another Ward Fund grant project is the ongoing work at the little green by Tudor Lodge Hotel. The Guides and Brownies from St Lawrence Church helped the EHG volunteer gardeners clear the area and plant daffodils and shrubs, yet again on a cold, wet and windy day. A seat and pathway will be installed soon.



*Planting Tudor Lodge corner*

As part of the Hillingdon Civic Pride programme Eastcote War Memorial has been renovated. The Memorial has been cleaned, and new paths, seats and litter bins provided. The surrounding shrubs have been pruned, and the yew hedge lowered. It was becoming so tall that youngsters attending the Armistice Day Memorial Service couldn't see over it. The hedge will take time to recover but should be looking better by November. The Memorial is to be re-dedicated in late May or early June.

## **EASTCOTE HOUSE GARDENS**

After a very dry autumn and snowy winter made work in the Walled Garden difficult, the new planting is now taking place. The Rock Garden outside it has already been replanted, with Giles Hayward of Haste Hill Nurseries providing a planting plan and sourcing the plants. Taylor Wimpey kindly donated funding for the plants.

The Walled Garden is full of surprises, and not always good ones. Four one-metre cubes of concrete were found at the corners of the L-shaped borders, just six inches below ground level! Fortunately the Blue Sky team dealt with these for us. Enterprise, the Council's maintenance contractor, is sourcing all the plants we need, and Giles Hayward is looking after them for us between planting sessions. Four local schools have been involved in the replanting: Newnham Junior, Coteford Infants, Field End Infants and Haydon Senior.

In a joint project with Eastcote Horticultural Society, who celebrate their 75th anniversary this year, native bluebells were planted in the wooded area of the Gardens near the Pinn. A former Eastcote resident donated the money for the bluebells.

Eastcote House Gardens has been entered for Green Flag status, the judging for which is at the end of May. A five-year management plan has been drawn up as part

of the Green Flag entry, and is available on the Hillingdon Borough website, listing our future projects for the Gardens.

London in Bloom has a new category, “It’s your Neighbourhood”, for a community project that meets the following three criteria – being a community project, ecologically friendly, and teaching gardening skills. As the Walled Garden project meets all three, we have entered it. Judging is in mid-July and we are keeping our fingers crossed.

So many people are involved in raising Eastcote House Gardens to a standard of excellence: Friends of Eastcote House committee and gardeners, Damien Searle of Green Spaces Hillingdon, Bryan Bilbie and team at Enterprise, the Blue Sky team, Giles Hayward, Haste Hill Nurseries, along with financial support from the Lottery Fund and Taylor Wimpey.

Do you have any memories of Eastcote House, or maybe you had a relation who worked there in the past? Perhaps you attended a group that used Eastcote House after it became a community centre. If so, please share them with the Friends Group. These memories are too precious to be lost.

*Lesley Crowcroft, Conservation*

**Eastcote Conservation Panel along with Hillingdon’s Green Spaces**



**Eastcote Celebration Picnic**

**17 July 2010**

**Eastcote House Gardens**

**Junction of High Road Eastcote and Field End Road**

**11.30am – 4.00pm**

**Celebrating the newly planted Walled Garden**

Come along and bring a picnic. There will be Morris dancers, Bell-ringers, Storytellers, Stalls and much more.

**For information contact:**

**Lesley Crowcroft: 020 8866 8436 or Linda Laurie: 020 8866 9058**

The third application to redevelop Initial House, 150 Field End Road, was withdrawn by the developers after the Council's planning officer recommended refusal. Thank you, Eastcote residents, for writing letters of objection and signing the petition. Also many thanks to Hammond Roberts for making the petition available in their shop. We now await the fourth application!

Although there have not been as many Full planning applications submitted to Hillingdon Council, there are nevertheless many applications for a Certificate of Lawfulness for Householder Permitted Development. Under the new Permitted Development Rules, householders can extend their property up to 50 per cent. These extensions are not governed by design rules and appear to be able to disregard Hillingdon's Design and Access planning documents. Nor are such applications sent out for public consultation.

So if your neighbour decides to build a monstrosity next to you, either by extending the dwelling or building an over-sized out-house (under Permitted Development Rules, an out-house can be up to 50 per cent of the garden),

- 1) You will not be told.
- 2) If you find out and complain, it is most likely you will be ignored.

These rules have come from central government and if Hillingdon refuse a certificate, the matter can be decided by the Planning Inspectorate in Bristol, a government department. Big changes are needed here.

*Lesley Crowcroft, Planning*

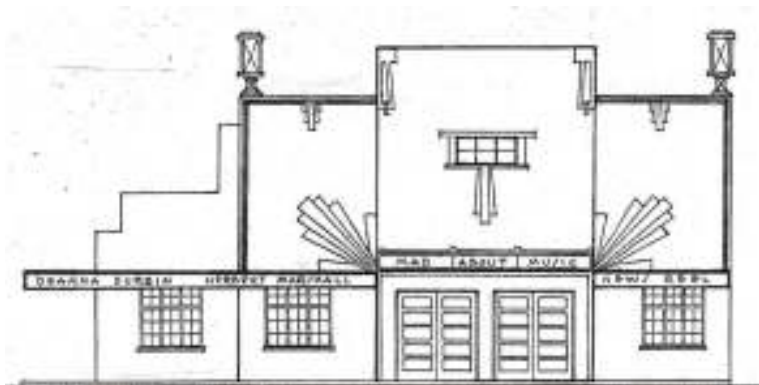
### **“STOP PRESS” – EASTER FUN**

Congratulations to the Bessingby & Cavendish (Parks) Management Advisory Group (BACMAG) for a highly successful Easter Egg Hunt on Easter Monday. There was an excellent turnout of some 200 children with their families, and all seemed to have a really good time despite the mud. WELL DONE.

Although the Initial House developers withdrew their planning application in advance of the North Planning Committee meeting, the Field End Road building may yet be a thing of the past. But how many of us remember the Ideal Cinema which previously stood on the same spot?

In the mid-1920s, Telling Brothers, later known as W. A. Telling Ltd, developed the Eastcote End Park Estate at Morford Way and built the first row of shops, Field End Parade (now all in the Morford Way Conservation Area). Next to the shops, for the benefit of Eastcote residents, Tellings also built Field End Hall, where dances were held twice a week and local societies staged productions such as the April 1928 performances of Gilbert and Sullivan's *The Pirates of Penzance* by the Ruislip and District Musical & Dramatical Society.

However, at this date, much of Eastcote life was still centred around the old village. So to attract a larger audience, and take advantage of the proximity of Eastcote Halt on the Metropolitan Railway, Tellings turned the hall into a cinema. They named it the Ideal Cinema, to complement their new Morford Way "Ideal" villas in the "Ideal Residential Suburb". It was basic to begin with, but after the Astoria Cinema opened in Ruislip, the hall was completely refurbished. It reopened in 1935 with a new modernist front, an entrance hall, raked plush lounge seating for 425 patrons, improved ventilation and lighting, and a stage. The transformation, it was boasted, made it a miniature "West End house".



*Architect's drawing of the Ideal Cinema's front elevation*

Early in the war the cinema was forced to close for a while, but reopened in 1941 with modified screening times. By the 1950s though, lack of demand threatened its close. A last-minute attempt by local dance and drama teachers, Mr and Mrs H. Reese of Lowlands Road, to keep the cinema open as a repertory theatre failed. It finally closed in 1956 with a double bill of *The Far Horizons*, a western, and the British thriller, *Triple Blackmail*.

The Ideal Cinema was demolished in the 1960s and in its place the MCC (Middlesex County Council) built an office block (c.1968). This became the head office for Europe's largest mobile crane manufacturers, Coles Cranes, and was named Steel House after the family who owned the company. Following their takeover by the Acrow Group, Coles moved to Harefield and Initial Services took on the building, giving it the current name.

*Karen Spink*

### *Eastcote Art Society*

The Society has enjoyed a range of demonstrations from professional artists over the last few months. Some artists travelled long distances to show us their talents, using a range of mediums including acrylic, pastel, oil and mixed media. During our working evenings we try to emulate the professionals with mixed success. All our demonstrations and working evenings are held in the Eastcote Community Centre in Southbourne Gardens. Please contact me if you would like a programme of events.

We will again be holding our annual exhibition in the Cow Byre in Ruislip from 23 May until 5 June. All visitors are welcome.

We are intending to visit the Winsor & Newton factory and Museum in Harrow this year. If any readers of the Newsletter are interested in joining us on the visit, please contact me as soon as possible.

**For further information call Graham Pellow on 020 8582 1522 or email [grahampellow@yahoo.co.uk](mailto:grahampellow@yahoo.co.uk)**

## **TRANSPORT AND ROAD SAFETY**

Of the number of local road-safety concerns brought to ERA's attention, one of the most long-standing is Cheney Street. With no pavements in some sections, this is a road where inappropriate speed is both a safety and quality-of-life issue – a common theme. After a protracted period of lobbying, a road-safety improvement scheme should be introduced in 2010/11, with a consultation on the detail starting soon – funding having been approved.

Eastcote Road in the vicinity of Fore Street, and Field End Road near Bridle Road have had similar speeding concerns, in addition to suffering a number of crashes. The Council have recently introduced a number of measures (see Resident Power), and in other measures to enhance road and public safety they have been installing new pedestrian crossings (see More Safety for Pedestrians). The proposed Field End Road-Bridle Road crossing follows a successful campaign involving a petition with more than 600 signatures. A crossing, to facilitate bus-tube interchange, is still expected outside Eastcote station.

With the expected reduction in public spending it is increasingly important that remaining monies are used wisely, which requires a good understanding of what the problems are. What is of concern, and is highlighted by the experience in Eastcote Road and Field End Road, is the fact that official accident statistics “count” only personal-injury collisions. No injury equals No accident, even if it is reported to the police and involves serious damage! The ingredients for a serious crash may be present – i.e., bad driving – but because no injury was recorded the accident database ignores it; and so it appears do the Council and the police.

One way in which Eastcote's problem locations can be highlighted, however, is by residents submitting their concerns and ideas on a Hillingdon Council Road Safety Suggestion Form, available on the Council's website via

<http://www.hillingdon.gov.uk/index.jsp?articleid=7732>. This is currently a pdf but an on-line facility is due shortly.

***Ian Brooks, Transport and Safety***

## **MORE SAFETY FOR PEDESTRIANS**

### **Perhaps slower for motorists**

At the time of writing Hillingdon Council are planning or have constructed five new pedestrian crossings in Eastcote. These are at

- Eastcote Road, east of Hume Way, to accommodate the increase in school children crossing to the expanded Bishop Ramsey School.
- Eastcote Road, opposite RAF Eastcote near the current Visitor Centre. This crossing will be signal-controlled to take people from the new development and the expanded public footpath/cycle way to the schools in Fore Street and to Ruislip Woods.
- Bridle Road, near St Lawrence Church, to improve safety at the junction of Bridle Road and Field End Road.
- Field End Road, near Cavendish Pavilion by the junction with Ferncroft Avenue, to allow school children to cross.
- Fore Street, opposite Coteford School.

## **RESIDENT POWER**

These five new pedestrian crossings have mostly followed campaigns by local residents. Here are three other examples of the power of residents' action, pressure and campaigns. There are many more.

- Following numerous car crashes on Eastcote Road near Fore Street, new signage, an electronic speed indicator and anti-skid surfacing have been installed.
- After a completely separate campaign following car crashes on Field End Road between Park Farm Close and Bridle Road – including cars ending up in the front garden of Jackie Redrup, our assistant on Planning Matters – new signage, an electronic speed indicator and anti-skid surfacing have been installed here also.
- As the result of a petition and petition hearing, the Council have agreed to install CCTV cameras in The Sigers to try to combat the serious and protracted spate of vandalism there.

## POLICE MATTERS

Crime figures throughout the London Borough of Hillingdon during the 11 months from April 2009 to end February 2010 continue to reflect an improving trend, particularly in the north of the borough and for those crimes involving violence or the threat of violence to individuals. However, while this is also the case in the wards covered by Eastcote Residents' Association, disturbingly the incidents of residential burglary have increased considerably. In Eastcote & East Ruislip the increase is 36.4 per cent from 44 cases last year to 60 in the current period, while in Cavendish it is 37.5 per cent from 40 to 55 cases. Please heed the advice given in previous issues of ERA News and ensure your homes are properly protected. Securely lock outer doors when premises are unoccupied, fit security devices if these are lacking, and mark your property with Smartwater or similar products. Burglar alarms are also recommended. Thefts from motor vehicles are on the rise as well, which could indicate that motorists are still careless about leaving items in their cars in full view of passing opportunist thieves.

Each year the borough's 22 Safer Neighbourhood Ward Panels are invited to submit their priorities for action by the police. The five most commonly prescribed are Anti-social behaviour (identified by 20 wards and representing 31 per cent of all priorities), Burglary, Drug dealing and use, Road safety and speeding vehicles, and Motor vehicle crime.

**The following scam** is reportedly operating in the borough. It involves a telephone call from someone claiming to be from BT, threatening to cut off your phone because of an unpaid bill – even if you are not a BT customer. If you query the authenticity of the caller, he or she is able to “prove” their authority by inviting you to try to make a call and then cutting you off, using a simple trick that could seem convincing. The caller then invites you to settle the unpaid bill immediately over the phone by credit card, stating also that there is a charge of £118 if reconnection is required. BT does not operate in this way; do not give any information, just replace the handset. The scam is, of course, an attempt to obtain credit card details for fraudulent purposes.

*Ian Murray, Police*

### THE MET POLICE WEBSITE

Did you know there is information about your Safer Neighbourhood Team (SNT) online at <http://www.met.police.uk/teams/hillingdon>.

You will find details about your SNT such as photos, contact details, news and locally agreed priorities. There are also dates of surgeries telling you when and where you can meet your Safer Neighbourhood Team.

## POLICE SAFER NEIGHBOURHOODS WARD PANEL

Following on from the general information in the last newsletter about the Police Safer Neighbourhoods Team (SNT), you may be interested to know that there is liaison between the police team and local residents in the Eastcote & East Ruislip ward via the SNT Ward Panel. This acts as a voice for the local community in partnership with the police. The panel is relatively new, and if you would like to know more about its operation or attend a meeting – you might even be interested in serving on the panel – please contact Roger Elliott on 020 8868 1858 or email [rogerelliott284@btopenworld.com](mailto:rogerelliott284@btopenworld.com).

## Ruislip, Northwood and Eastcote Local History Society

Ruislip, Northwood and Eastcote Local History Society meets on the third Monday of each month from September to April at 8.15pm at St Martin's Church Hall, Ruislip. Visitors are welcome (£2 donation). It also organises walks and outings, undertakes research and produces regular publications.

### *Lecture programme 2010*

<i>Meeting</i>	<i>Topic</i>	<i>Speaker</i>
20 September	Saxon rural settlements in the London region	Robert Cowie
18 October	<b>AGM.</b> Vehicle manufacture in Hillingdon	Tony Beadle
15 November	“Good God! Women!” Suffragettes in a military hospital	Jennian Geddes
20 December	Ian Tait's Ruislip in the 1920s	Eileen Bowlit

For further information, please contact the Membership Secretary, Heather Trease, on 07867 975400, or look at our website:  
[www.RNELHS.flyer.co.uk](http://www.RNELHS.flyer.co.uk)



## **Eastcote Horticultural Society**

Assisting Local Gardeners for over Sixty Years

Come and join like-minded people for only £2 per family.

### **What you get**

- Advice and Gardening tips from the Trading Hut open Sundays 10.30am to 12.15pm in March, April, May and September; 11am to 12 noon in February, June, July, October and November.
- Opportunity to display your talents at the Spring, Summer and Autumn Shows (and get your name in the local paper). Dates for 2010 shows are:  
SUMMER SHOW – 19 June  
AUTUMN SHOW – 11 September.
- Teddy Bears Picnic at Eastcote House Gardens on 17 July.

The Trading Hut is next door to Eastcote Community Centre, Southbourne Gardens, or telephone Alan Thomas on 020 8429 0901, email [eastcotehorticultural@yahoo.co.uk](mailto:eastcotehorticultural@yahoo.co.uk), or visit our website [www.succulent-plant.com/eastcote](http://www.succulent-plant.com/eastcote)

## **Contacts**

### **ERA COMMITTEE**

**Chairman:** Chris Groom – 020 8866 0985

**Planning:** Lesley Crowcroft – 020 8866 8436

**Health & Community Voice:** Peter Collins – 020 8868 9351

**Police:** Ian Murray – 020 8866 4133

Elizabeth Beggs – 020 8429 4713

**HARA:** Irene Groom – 020 8866 0985

**Conservation:** Lesley Crowcroft – 020 8866 8436

**Senior Road Steward:** Karen Spink – 020 8866 7279

**Treasurer:** Roger Brown – 020 8868 5681

**Ruislip Woods:** Diana Williams – 01895 624377

**Ruislip Lido Management Advisory Group:** Peter Collins – 020 8868 9351

**RAF Eastcote:** Chris Groom – 0208 866 0985

**Transport and Road Safety:** Ian Brooks – 020 8866 9925

**Newsletter:** Linda Laurie – 020 8866 9058

